



Make-A-Map™ 3D

Platform:
CD-ROM for
Win3.1, Win95,
and Mac
Subject: Geography

Age: 7 - 11

once children get lost in this software,
they never will again.

virtual 3D maps that a child
can create and then drive through

As any parent knows, one of the most critical skills a young child needs is basic orienteering: how to find their way, and how to follow and give directions. And, on into adulthood, a strong grasp of geography, map-reading, and even map-making is essential.

Make-A-Map™ 3D, of the Learning Ladder™ Series from Panasonic, enables a child to learn all these principles through a fun, engaging virtual cartography experience. Madison the Map Man and PC lead children on cartographic adventures through the hometowns they create themselves.

The child becomes the Map Master by setting familiar streets, landmarks, and topography into a 3D virtual map. And, as an incentive to completing the map, the child can actually “drive” a racecar through the virtual streets he or she just charted. Subsequent segments of Make-A-Map take the young cartographer further afield; on journeys across the U.S. and Canada.

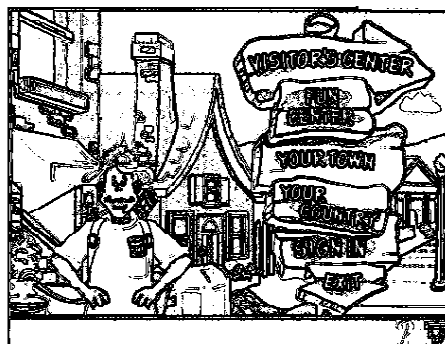
Camera and Compass included!!



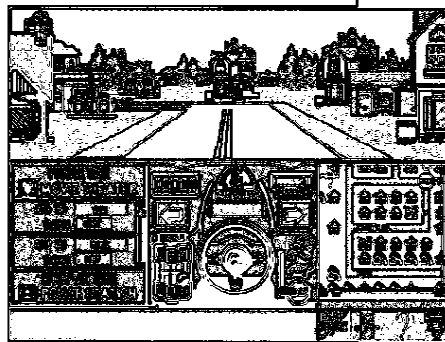
As a special bonus, Make-A-Map comes with a camera and compass that children can use to gather map-making data in their own neighborhoods.

The Learning Ladder Series From Panasonic

Learning Ladder educational software from Panasonic Interactive Media helps kids develop key skills in a colorful, interactive environment. Building both knowledge and confidence, Learning Ladder software fosters a child's desire to learn by letting them experience the fun of learning. The Learning Ladder line covers five core subject areas—Language, Math, Social Studies, Science and Creativity—for children ages 3 to 10.



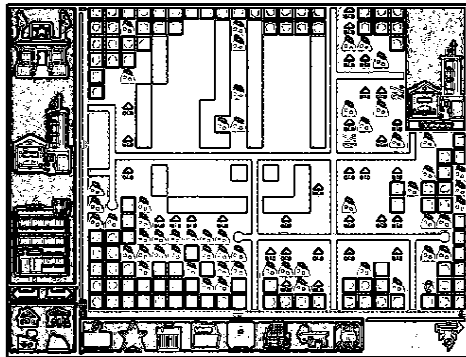
Madison the Map Man leads kids through a 3D virtual map experience.



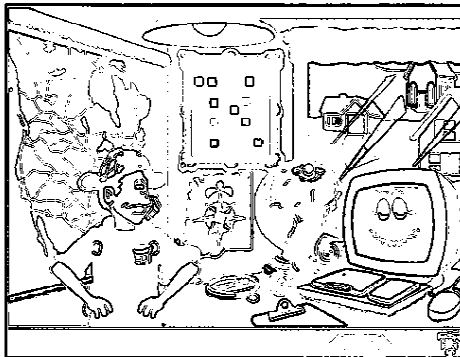
A typical 2D map magically transforms into a 3D neighborhood in which kids can drive through, play navigational games, and explore.



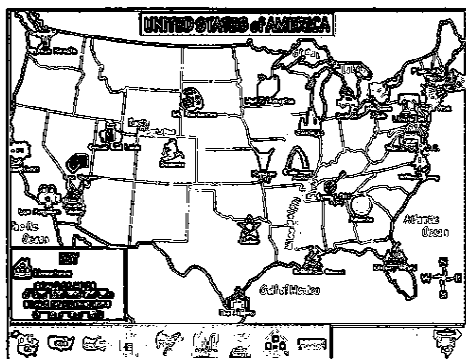
Make-A-Map 3D Features



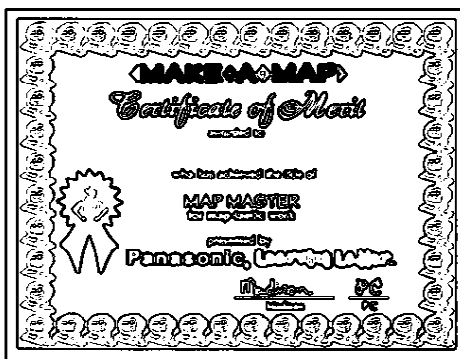
Children enter the map-making zone and discover a land of limitless creativity where they map their hometowns, another city, or even a fantasy town.



Children can test their own mapitude at this geography workshop. Madison and PC provide the tools for understanding maps and mapping through exciting games and activities.



Young explorers drive across the United States and Canada checking out major cities, state and national parks, landmarks and tourist attractions. They'll learn which direction they'll need to take, and how many miles they'll need to travel, to get to almost anywhere.



Children receive a certificate at the completion of their fun-filled adventure.

System requirements

	Windows		Mac	
Media	CD-ROM		CD-ROM	
OS	Windows3.1 or Windows95		System 7.1.1 or higher	
	Minimum	Recommended	Minimum	Recommended
Processor	486DX4/100MHz	Pentium 133 or faster	68040/40MHz	PowerMac 601/60 or better
Memory	8MB	16MB	8MB	16MB
Monitor	SVGA, 8-bit color	SVGA, 8-bit color	8-bit color	8-bit color
Hard disk	5MB free space	5MB free space	5MB free space	5MB free space
Sound	SoundBlaster compatible	SoundBlaster compatible	8-bit audio (built-in)	8-bit audio (built-in)
CD-ROM drive	2x	4x or faster	2x	4x or faster

Parts Numbers

Part Number: FZ-SP0023	ITF Master: 5 06 07865 10022 4
UPC: 6 07865 10022 9	ITF Inner: 3 06 07865 10022 0

Publisher: Panasonic Interactive Media Company
 Developer: Toucan Media, Inc & Digital Media International
 Web site address: <http://www.learningladder.com>

Order: Contact your PIM representative or call 1-408-653-1888
 Technical Support: Call 1-408-653-1898

